

Тиски модульные ED03, ES03, ET03, EX99, EG, E99- EG, EUROPA 03 и другие

Технические характеристики



Архангельск (8182)63-90-72
Астана (7172)727-132
Астрахань (8512)99-46-04
Барнаул (3852)73-04-60
Белгород (4722)40-23-64
Брянск (4832)59-03-52
Владивосток (423)249-28-31
Волгоград (844)278-03-48
Вологда (8172)26-41-59
Воронеж (473)204-51-73
Екатеринбург (343)384-55-89
Иваново (4932)77-34-06

Ижевск (3412)26-03-58
Иркутск (395)279-98-46
Казань (843)206-01-48
Калининград (4012)72-03-81
Калуга (4842)92-23-67
Кемерово (3842)65-04-62
Киров (8332)68-02-04
Краснодар (861)203-40-90
Красноярск (391)204-63-61
Курск (4712)77-13-04
Липецк (4742)52-20-81

Киргизия (996)312-96-26-47

Магнитогорск (3519)55-03-13
Москва (495)268-04-70
Мурманск (8152)59-64-93
Набережные Челны (8552)20-53-41
Нижний Новгород (831)429-08-12
Новокузнецк (3843)20-46-81
Новосибирск (383)227-86-73
Омск (3812)21-46-40
Орел (4862)44-53-42
Оренбург (3532)37-68-04
Пенза (8412)22-31-16

Россия (495)268-04-70

Пермь (342)205-81-47
Ростов-на-Дону (863)308-18-15
Рязань (4912)46-61-64
Самара (846)206-03-16
Санкт-Петербург (812)309-46-40
Саратов (845)249-38-78
Севастополь (8692)22-31-93
Симферополь (3652)67-13-56
Смоленск (4812)29-41-54
Сочи (862)225-72-31
Ставрополь (8652)20-65-13

Казахстан (772)734-952-31

Сургут (3462)77-98-35
Тверь (4822)63-31-35
Томск (3822)98-41-53
Тула (4872)74-02-29
Тюмень (3452)66-21-18
Ульяновск (8422)24-23-59
Уфа (347)229-48-12
Хабаровск (4212)92-98-04
Челябинск (351)202-03-61
Череповец (8202)49-02-64
Ярославль (4852)69-52-93

carminatimorse.nt-rt.ru || cmb@nt-rt.ru

Modular vice type Europa 03 / ED 03 / ES 03/ ET 03

The Europa 03 type is a high precision, modular vice. It has a mechanical-mechanical locking facility, and a covered manoeuvring screw. It can be assembled in three different solutions according to locking requirements:

TYPE ED.03: DOUBLE SELF-LOCKING VICE with facility for closing the two pieces simultaneously, with tolerance up to 2mm.

TYPE ES.03: SINGLE VICE WITH THRUST-LOCKING

TYPE ET.03: SINGLE VICE WITH PULL-LOCKING.

The covered spindle screw and use of chromium-nickel materials hardened to 58 HRC, assure almost unlimited long-life.

The vice, ground on all surfaces., can be used onplane or squared with a tolerance of +/-0.02. Locking is by a mechanical-mechanical multiplier and a force selector to ensure constant thrust control.

By using the stepped jaws, you can position the piece at three different heights, thus avoiding use of parallels.

LOCKING FORCE

MOD. 100 WITH KG./F 2000

MOD. 125 WITH KG./F 3000

MOD. 150 WITH KG./F 4000

Modular vice

- Mechanical-mechanical locking
- Assembled in three different solutions
- Chromium-nickel materials hardened
- Ground on all surfaces
- Can position the piece at three different heights



Vice Europa 99 / ED 99 / ES/T 99 / EA 99

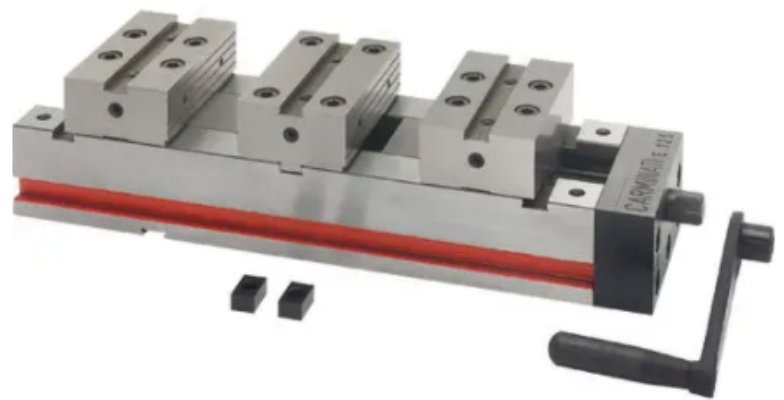
The series EUROPA 99 is a composable high precision vice with varied utilizations; can be used as you like with infinite blocking solutions:

- type E.D.M.A.99 - autocentred self-locking doubled vice
- type E.M.A.99 - autocentred locking vice
- type E.M.S.99 - vice with draught or thrust blocking.

On the mobile and fixed parts there is a position guide for eventually assembling of special jaws.

This range can be used on level ground or on side.

Entirely buildt in chromium nickel steel, hardened in 58 HRC and rectified with centesimal tolerance, to secure unlimited duration



- Composable high precision vice
- Various utilizations
- Infinite blocking solutions
- Buildt in chromium nickel steel
- Rectified with centesimal tolerance

Vice OE 99: OED.99 / OES.99 / OEGD.99 / OEGS.99



VICE OED.99 / OES.99 / OEGD.99 / OEGS.99

These vices are known as TYPE OE.99-OEG.99. Secure locking, without tiring the operator, is obtained by the use of a hydraulic cylinder fitted in the cover and an air-oil pressure multiplier.

The carriage is positioned by screw rotation.

To lock the piece, just activate the air-oil multiplier valve - the hydraulic stroke is 6 mm.

Locking force at 8 bar for models 100-125: 1900 kg./F

Locking force at 8 bar for model 150: 3500 kg./F

The hydraulic

locking system can be installed on models. ED.99-ES.99-EGD.99-EGS.99.

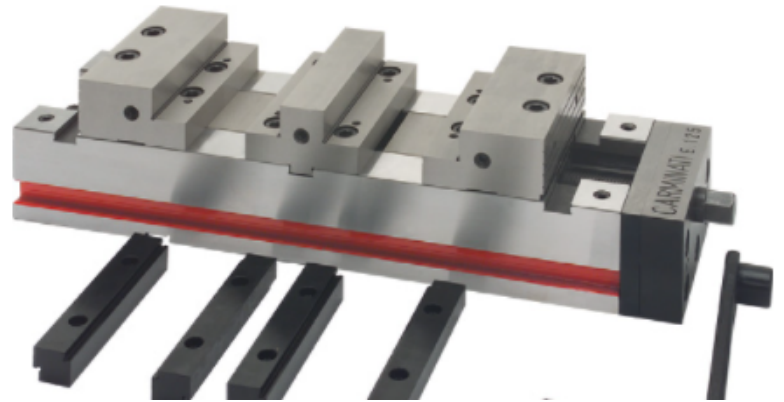
-Hydraulic locking

- Locking force from Kg/F1900

- Locking system on models: ED99-ES99-EGD99-EGS99

- Secure locking without tiring the operator

Vice EG 99: EGS/T 99 / EGD 99 / EGA 99



By replacing the fixed bodies and carriages on the TYPE EUROPA E.99 vices, they become EG.99.

By using the stepped jaws, the piece can be positioned at three different heights, thus avoiding the use of parallels. They are built for all Europa 99 models

- Three different heights
- Built with fixed bodies and carriages

Архангельск (8182)63-90-72
Астана (7172)727-132
Астрахань (8512)99-46-04
Барнаул (3852)73-04-60
Белгород (4722)40-23-64
Брянск (4832)59-03-52
Владивосток (423)249-28-31
Волгоград (844)278-03-48
Вологда (8172)26-41-59
Воронеж (473)204-51-73
Екатеринбург (343)384-55-89
Иваново (4932)77-34-06

Ижевск (3412)26-03-58
Иркутск (395)279-98-46
Казань (843)206-01-48
Калининград (4012)72-03-81
Калуга (4842)92-23-67
Кемерово (3842)65-04-62
Киров (8332)68-02-04
Краснодар (861)203-40-90
Красноярск (391)204-63-61
Курск (4712)77-13-04
Липецк (4742)52-20-81
Киргизия (996)312-96-26-47

Магнитогорск (3519)55-03-13
Москва (495)268-04-70
Мурманск (8152)59-64-93
Набережные Челны (8552)20-53-41
Нижний Новгород (831)429-08-12
Новокузнецк (3843)20-46-81
Новосибирск (383)227-86-73
Омск (3812)21-46-40
Орел (4862)44-53-42
Оренбург (3532)37-68-04
Пенза (8412)22-31-16
Россия (495)268-04-70

Пермь (342)205-81-47
Ростов-на-Дону (863)308-18-15
Рязань (4912)46-61-64
Самара (846)206-03-16
Санкт-Петербург (812)309-46-40
Саратов (845)249-38-78
Севастополь (8692)22-31-93
Симферополь (3652)67-13-56
Смоленск (4812)29-41-54
Сочи (862)225-72-31
Ставрополь (8652)20-65-13
Казахстан (772)734-952-31

Сургут (3462)77-98-35
Тверь (4822)63-31-35
Томск (3822)98-41-53
Тула (4872)74-02-29
Тюмень (3452)66-21-18
Ульяновск (8422)24-23-59
Уфа (347)229-48-12
Хабаровск (4212)92-98-04
Челябинск (351)202-03-61
Череповец (8202)49-02-64
Ярославль (4852)69-52-93

carminatimorse.nt-rt.ru || cmb@nt-rt.ru