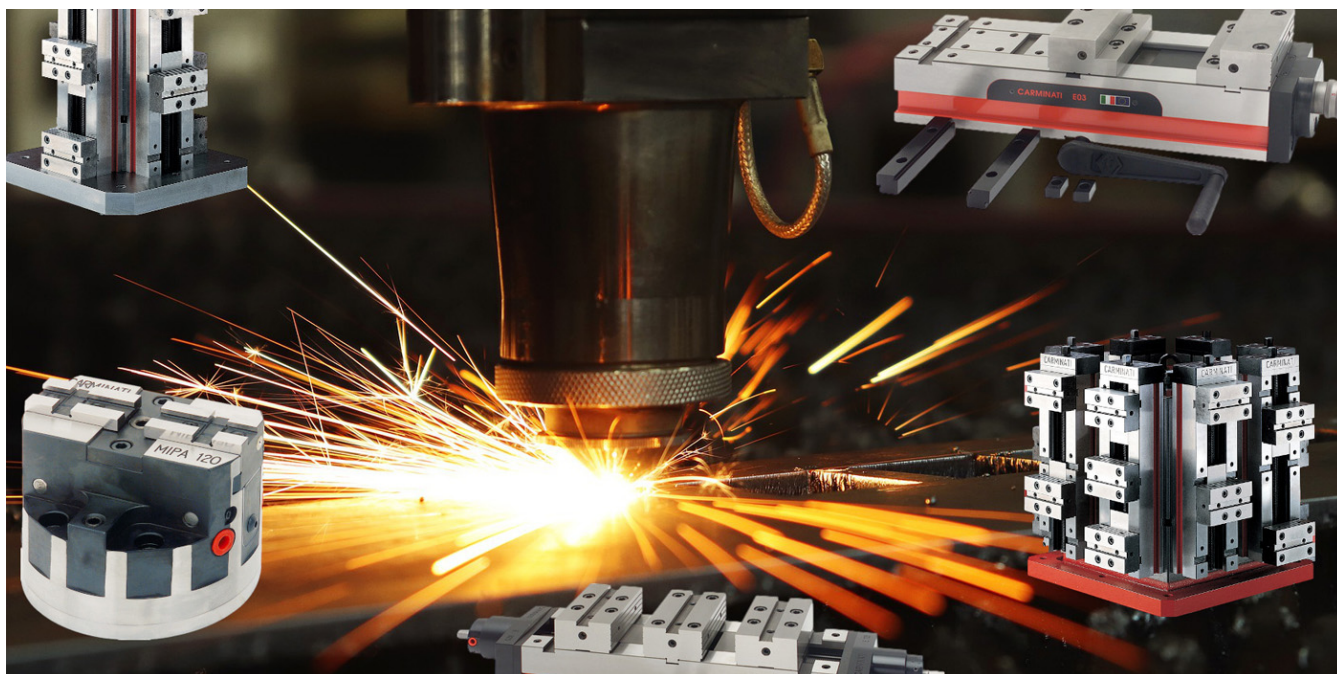


# Тиски со скошенными губками SP.81, DSP81, PSP.81, SPE81, DSPE.81, PSPE81, SP.81 Extentions, SPE.81 Extentions

## Технические характеристики



Архангельск (8182)63-90-72  
Астана (7172)727-132  
Астрахань (8512)99-46-04  
Барнаул (3852)73-04-60  
Белгород (4722)40-23-64  
Брянск (4832)59-03-52  
Владивосток (423)249-28-31  
Волгоград (844)278-03-48  
Вологда (8172)26-41-59  
Воронеж (473)204-51-73  
Екатеринбург (343)384-55-89  
Иваново (4932)77-34-06

Ижевск (3412)26-03-58  
Иркутск (395)279-98-46  
Казань (843)206-01-48  
Калининград (4012)72-03-81  
Калуга (4842)92-23-67  
Кемерово (3842)65-04-62  
Киров (8332)68-02-04  
Краснодар (861)203-40-90  
Красноярск (391)204-63-61  
Курск (4712)77-13-04  
Липецк (4742)52-20-81

Киргизия (996)312-96-26-47

Магнитогорск (3519)55-03-13  
Москва (495)268-04-70  
Мурманск (8152)59-64-93  
Набережные Челны (8552)20-53-41  
Нижний Новгород (831)429-08-12  
Новокузнецк (3843)20-46-81  
Новосибирск (383)227-86-73  
Омск (3812)21-46-40  
Орел (4862)44-53-42  
Оренбург (3532)37-68-04  
Пенза (8412)22-31-16

Россия (495)268-04-70

Пермь (342)205-81-47  
Ростов-на-Дону (863)308-18-15  
Рязань (4912)46-61-64  
Самара (846)206-03-16  
Санкт-Петербург (812)309-46-40  
Саратов (845)249-38-78  
Севастополь (8692)22-31-93  
Симферополь (3652)67-13-56  
Смоленск (4812)29-41-54  
Сочи (862)225-72-31  
Ставрополь (8652)20-65-13

Казахстан (772)734-952-31

Сургут (3462)77-98-35  
Тверь (4822)63-31-35  
Томск (3822)98-41-53  
Тула (4872)74-02-29  
Тюмень (3452)66-21-18  
Ульяновск (8422)24-23-59  
Уфа (347)229-48-12  
Хабаровск (4212)92-98-04  
Челябинск (351)202-03-61  
Череповец (8202)49-02-64  
Ярославль (4852)69-52-93

[carminatimorse.nt-rt.ru](http://carminatimorse.nt-rt.ru) || [cmb@nt-rt.ru](mailto:cmb@nt-rt.ru)

# Vice SP81: ISP.81 / MSP.81 / OSP.81

STEEL PRECISION VICES WITH DESCENDING JAWS TYPE SP.81. High precision SP.81 vice are made of hardened nickel steel. They are the show-piece of the Carminati production.

For holding piece with difficult shapes, the vice is fitted with optional components providing various solutions. Main feature: - descending jaws that clamp the piece on the plate under any conditions; - jaw return control; - wide opening and quick positioning for non-standard machining. They are particularly useful for toolmakers and diesinkers. All parts are hardened, which ensures maximum precision. They come in four models: 100 - 125- 150 - 200.

## TYPE ISP.81 / MSP.81

SP.81 vices with mechanical-hydraulic locking are known as ISP.81.

With mechanical-mechanical locking, they are known as MSP.81. If, by using the vernier scale cut on the screw, you select the necessary thrust for your work, you will always obtain constant locking.

## TYPE OSP.81

SP.81 vices with hydraulic locking from the series OSP.81. A hydraulic cylinder inserted in the screw and an air-oil pressure multiplier ensure quick and safe clamping, without excessive work for the operator.

The slide position can be adjusted by turning the screw with an ordinary wrench. The piece is clamped by operating the lever on the air-oil multiplier. This makes them particularly suitable for mass-productions.

Three models:

- MOD. 125 with 2500 Kg/F a 8 BAR
- MOD. 150 with 4500 Kg/F a 8 BAR
- MOD. 200 with 5500 Kg/F a 8 BAR

- Clamp the piece on the plate under any conditions
- OPS81 are suitable for mass-productions
- Made of hardened nickel steel
- All parts are hardened
- Fitted with optional components providing various solutions
- They come in various models



Available in four models:

- MOD. 100 Kg/F 2000
- MOD. 125 Kg/F 3000
- MOD. 150 Kg/F 4000
- MOD. 200 Kg/F 5000

## Vice DSP81: ODSP.81 / IDSP.81 / MDSP.81

The vices type DSP.81 are high precision working tools, composable between each other and the traditional SP.81, they are consenting solutions in various blocking situations.

The DSP.81 is to be considered a double vice for processing in series.

They can function with mechanical blocking (DSP.81), with mechanical hydraulic (IDSP.81), with mechanical-mechanical (MDSP.81) and oleopneumatic (ODSP.81).

The position of the bogie is effected by pushing the lside bar arranged on the low part of the leadnut.

Descending jaw return control zero. All buildt in chromium nickel steel, hardened in 58 HRC, rectified.

They assure max precision and perfect function.

At request they can be supplied with reduced jaws to fix the vice sideways.



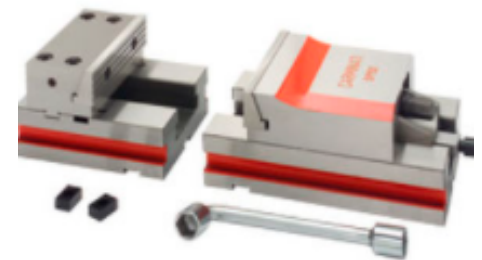
- Vices composable between
- Consenting solutions in various blocking situations
- Buildt in chromium nickel steel
- Rectified
- Max precision and perfect function
- Can be supplied with reduced jaws to fix the vice sideways

## Extensions SP 81

Use of a mobile extension A and fixed extension B to increase depth. To clamp long pieces.

Use of a mobile extension A and fixed extension B to increase holding depth. For large size pieces.

Use of a vice C and mobile extension A for pieces of unusual length.



- Increase holding depth
- Block pieces of unusual length

## Vice PSP 81: IPSP 81 / MPSP 81/ OPSP 81

The vices type PSP.81 are high precision working tools, composable between each other and the traditional SP.81, they are consenting solutions in various blocking situations. The PSP.81 is the ideal vice to block pieces with unusual dimensions.

They can function with mechanical blocking (PSP.81), with mechanical hydraulic (IPSP.81), with mechanical-mechanical (MPSP.81) and oleopneumatic (OPSP.81).

The position of the bogie is effected by pushing the lside bar arranged on the low part of the leadnut.

Descending jaw return control zero. All buildt in chromium nickel steel, hardened in 58 HRC, rectified.

They assure max precision and perfect function.

At request they can be supplied with reduced jaws to fix the vice sideways.

- Vices composable between
- Various blocking situations
- Buildt in chromium nickel steel
- Ideal to block pieces with unusual dimensions
- Max precision and perfect function
- Jaw return control zero



## Vice DSPE 81: IDSPE 81 / MDSPE81/ ODSPE 81

The vices type DSPE.81 are different from DSP.81 in the screw nut and the bogie. Compatible to each other and with type SPE.81, used in the same woorking as DSP.81.

They function with mechanical blocking (DSPE.81) mechanical hydraulic (IDSPE.81), mechanical-mechanical (MDSPE.81) and oleopneumatic (ODSPE.81). Descending jaws, jaw return control zero. Buildt in chromium nickel steel, hardened in 58 HRC, rectified.

They assure max precision and perfect function.

At request they can be supplied with reduced jaws to fix the vice sideways.

- Vices with descending jaws
- Various type blocking
- Buildt in chromium nickel steel
- Max precision and perfect function
- At request they can be supplied with reduced jaws
- Compatible with type SPE81



# Vice SPE 81: ISPE 81 / MSPE 81/ OSPE 81

HIGH PRECISION SPE81 economic vices are made of hardened nickel steel. The vice is fitted with optional components. The difference from type SP81 is the winding trolley. Main features: - Descending jaws that clamp the piece on the plate under any conditions; - Jaw return control and wide opening they are particularly useful for toolmakers and for pressing. All parts are grinded, which ensures maximum precision. They come in four models.

THE SPE81 ECONOMIC vice with mechanical-hydraulic closure is called ISPE81, with mechanical-mechanical closure is called MSPE81. Mechanicalhydraulic multiplier inserted in the screw ensure a quick and safe clamping without excessive work.

They come in three models:

- Model 125 with 3000 Kg/F
- Model 150 with 4500 Kg/F
- Model 200 with 5000 Kg/F

SPE81 ECONOMIC vices with oleopneumatic closure are called OSP81. A hydraulic cylinder inserted in the screw and an air-oil pressure multiplier ensure quick and safe clamping, without excessive work for the operator. The slide position can be adjusted by turning the screw with an ordinary wrench. The piece is clamped by operating the lever on the air-oil multiplier.

This makes them particularly suitable for mass-productions.

- MOD. 125 with 2500 Kg/F a 8 BAR.
- MOD. 150 with 4500 Kg/F a 8 BAR.
- MOD. 200 with 5000 Kg/F a 8 BAR.

- Vices with winding trolley
- Useful for toolmakers and for pressing
- Made of hardened nickel steel
- Various blocking type
- Jaw return control
- Wide opening



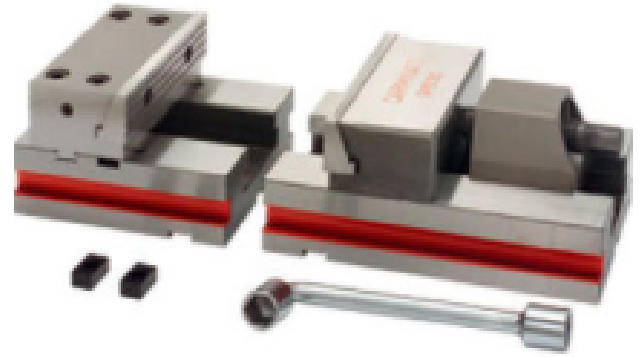
## Extensions SPE 81

Use of a mobile extension A and fixed extension B to increase depth. To clamp long pieces.

Use of a mobile extension A and fixed extension B to increase holding depth. For large size pieces.

Use of a vice C and mobile extension A for pieces of unusual length..

- Increase depth
- For to block pieces of unusual length



## Vice PSPE 81: OPSPE 81 / IPSPE81/ MPSPE 81

The vices type PSPE.81 are different from PSP.81 in the screw nut and the bogie. Compatible to each other and with type SPE.81, used in the same working as PSP.81.

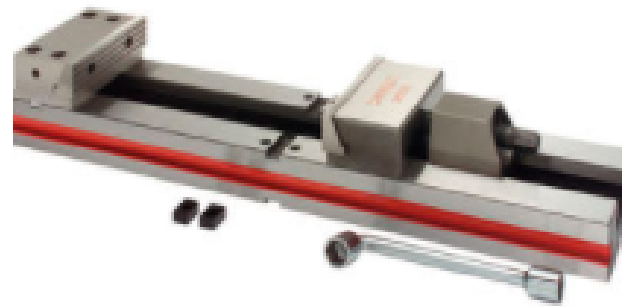
They function with mechanical blocking (PSPE.81) mechanical hydraulic (IPSPE.81), mechanical-mechanical (MPSPE.81) and oleopneumatic (OPSPE.81).

Descending jaws, jaw return control zero.

Built in chromium nickel steel, hardened in 58 HRC, rectified.

They assure max precision and perfect function. At request they can be supplied with reduced jaws to fix the vice sideways.

- Descending jaws
- At request supplied with reduced jaws



Архангельск (8182)63-90-72  
Астана (7172)727-132  
Астрахань (8512)99-46-04  
Барнаул (3852)73-04-60  
Белгород (4722)40-23-64  
Брянск (4832)59-03-52  
Владивосток (423)249-28-31  
Волгоград (844)278-03-48  
Вологда (8172)26-41-59  
Воронеж (473)204-51-73  
Екатеринбург (343)384-55-89  
Иваново (4932)77-34-06

Ижевск (3412)26-03-58  
Иркутск (395)279-98-46  
Казань (843)206-01-48  
Калининград (4012)72-03-81  
Калуга (4842)92-23-67  
Кемерово (3842)65-04-62  
Киров (8332)68-02-04  
Краснодар (861)203-40-90  
Красноярск (391)204-63-61  
Курск (4712)77-13-04  
Липецк (4742)52-20-81

Киргизия (996)312-96-26-47

Магнитогорск (3519)55-03-13  
Москва (495)268-04-70  
Мурманск (8152)59-64-93  
Набережные Челны (8552)20-53-41  
Нижний Новгород (831)429-08-12  
Новокузнецк (3843)20-46-81  
Новосибирск (383)227-86-73  
Омск (3812)21-46-40  
Орел (4862)44-53-42  
Оренбург (3532)37-68-04  
Пенза (8412)22-31-16

Россия (495)268-04-70

Пермь (342)205-81-47  
Ростов-на-Дону (863)308-18-15  
Рязань (4912)46-61-64  
Самара (846)206-03-16  
Санкт-Петербург (812)309-46-40  
Саратов (845)249-38-78  
Севастополь (8692)22-31-93  
Симферополь (3652)67-13-56  
Смоленск (4812)29-41-54  
Сочи (862)225-72-31  
Ставрополь (8652)20-65-13

Казахстан (772)734-952-31

Сургут (3462)77-98-35  
Тверь (4822)63-31-35  
Томск (3822)98-41-53  
Тула (4872)74-02-29  
Тюмень (3452)66-21-18  
Ульяновск (8422)24-23-59  
Уфа (347)229-48-12  
Хабаровск (4212)92-98-04  
Челябинск (351)202-03-61  
Череповец (8202)49-02-64  
Ярославль (4852)69-52-93

[carminatimorse.nt-rt.ru](http://carminatimorse.nt-rt.ru) || [cmb@nt-rt.ru](mailto:cmb@nt-rt.ru)